

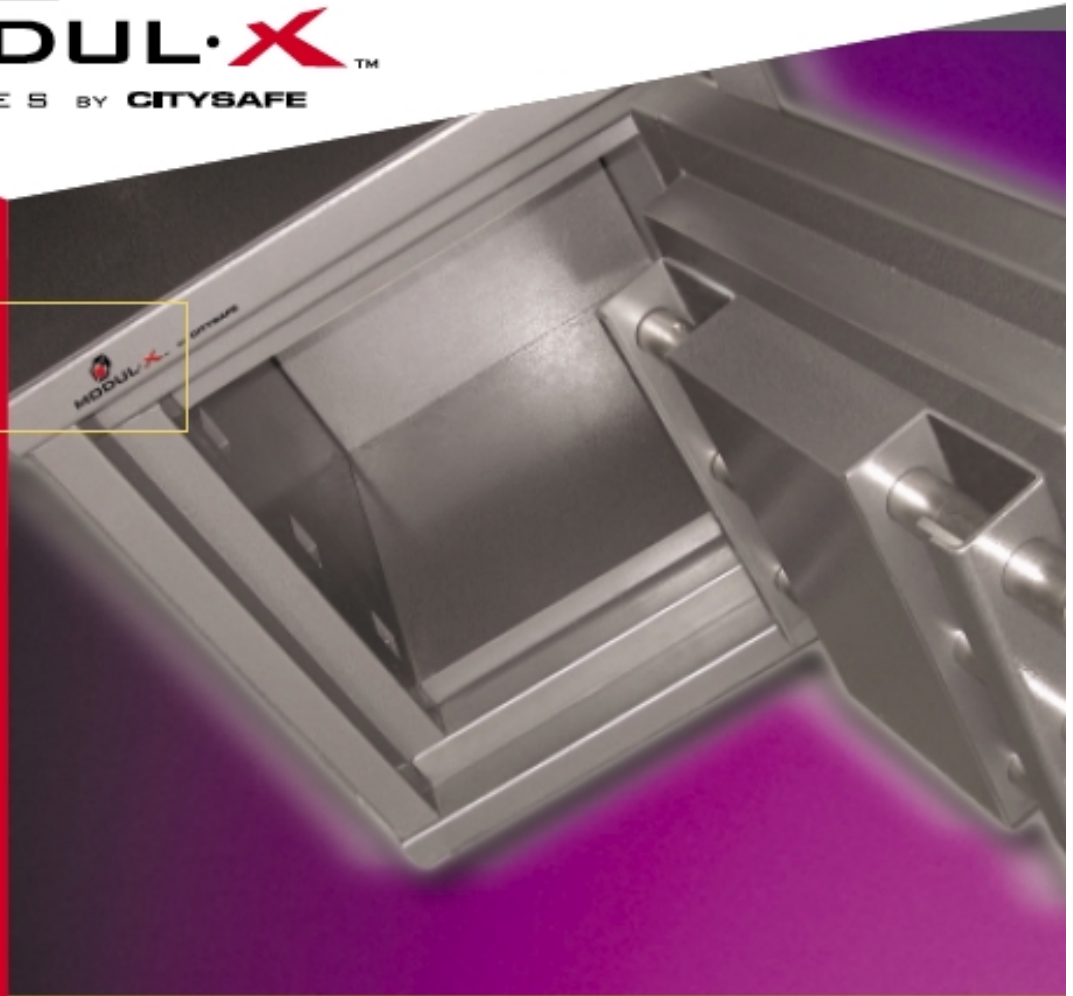
THE MOST VERSATILE VAULT IN THE WORLD



**MODUL•X™**  
S E R I E S B Y C I T Y S A F E

## SERIES 1

The MODUL•X Series 1 offers the most compact design for this series. These base units are completely expandable, as are all of the MODUL•X Series, and offer an affordable investment. This series was designed for use as either high value jewelers safes or professional quality safes for real protection of valuables within the home.

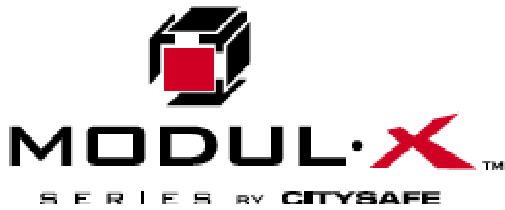


**x•treme**

protection and affordability

CITYSAFE has created the MODUL•X Series 1 to offer the most x•treme protection along with affordability. The Series 1 vault is designed to provide assured protection for your valuables. Your heirlooms, works of art, documents and records are protected for future generations.

The Series 1 also offers the ultimate protection for high value jewelers. Typical safes are not designed to withstand what the MODUL•X can handle. This technology keeps criminals and fire on the outside, where they belong. All MODUL•X Series 1, 2 and 3 are expandable and UL rated, making an affordable investment even more valuable.

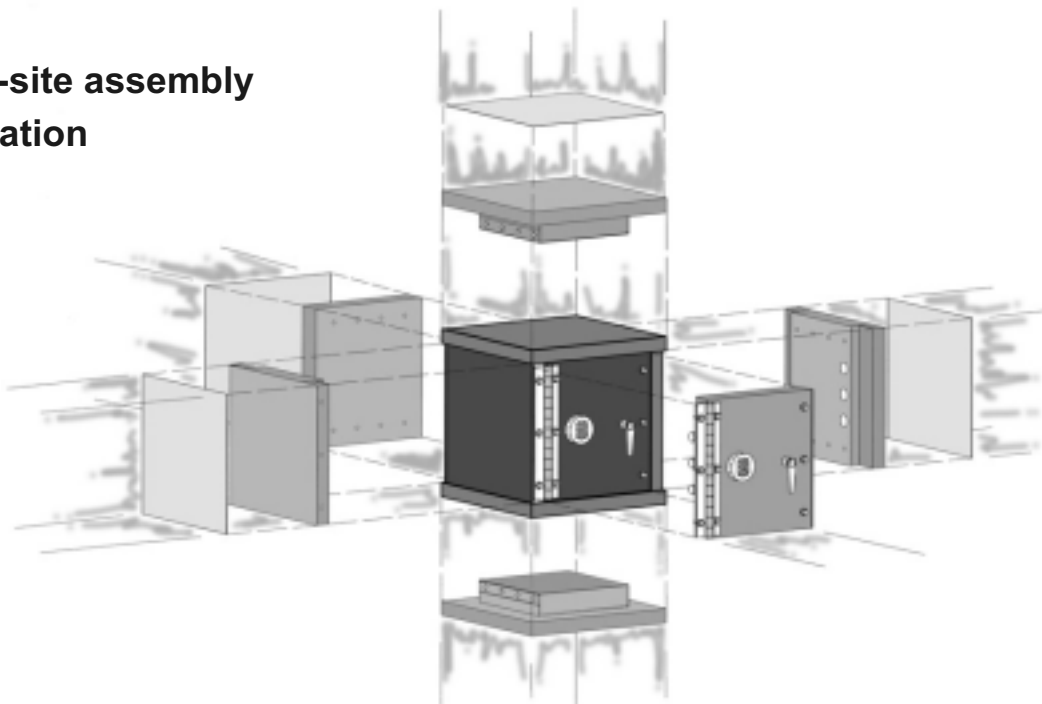


## Available options:

1. High-gloss exterior finishes
2. Antique-style pinstriping and custom graphics
3. Hardwood veneers
4. Precious metal hardware plating
5. Custom interior cabinetry



## Unique on-site assembly and installation



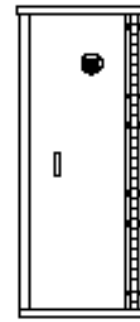
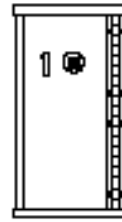
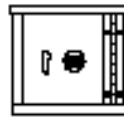
## MODUL•X SERIES 1 Features and Benefits:

- Modular Bolt Together Panels for Ease Of Delivery
- New High Strength Metal and Ceramic-like Katnix Barrier
- Durable Exterior Finish
- Large Vault-Door Quality Multiple Locking Bolts
- Concealed Variable Position Electronic Locking
- Total Assembled Weight Beyond Anything Burglars Can Carry Out
- Engineered Parts Such As Hinges Are Easily Replaceable
- Tempered Armor Glass Activated Multiple Relockers
- Easy Assembly Requiring Minimal Hand Tools
- Extremely Secure As Tested By UL
- Virtually Impenetrable As Proven In The Metropolitan Area
- Recognized By Lloyds Of London And Chubb Insurance
- Available In Non-Rated, UL TL 30, UL TL 30x6, and Jewelry Tool And Torch Resistant Grade

### MODUL•X 111

### MODUL•X 121

### MODUL•X 131



Interior Dimensions (Inches)	Height	15	36.5	58
	Width	17	17	17
	Depth	14	14	14

Exterior Dimensions (Inches)	Height	25	46.5	68
	Width	24	24	24
	Depth	24	24	24

Storage Capacity (Cubic Feet)	2.1	5	8
----------------------------------	-----	---	---

Weights In Pounds (± 5%)	1,164	2,021	2,838
--------------------------	-------	-------	-------

CitySafe, Inc. reserves the right to vary in detail the description and specification contained in this publication without incurring any obligation.



**ADVANCED Safe & Vault Engineering**  
 Novato, CA USA  
 (415) 878-0235  
[WWW.ADVANCEDSAFE.COM](http://WWW.ADVANCEDSAFE.COM)



Underwriters  
 Laboratories Tested



Patent No. 6044776  
 Patent No. 6273007 B1  
 Patent No. 6386122 B2  
 Patent No. 0166483

©2003 CITYSAFE, INC. ALL RIGHTS RESERVED.